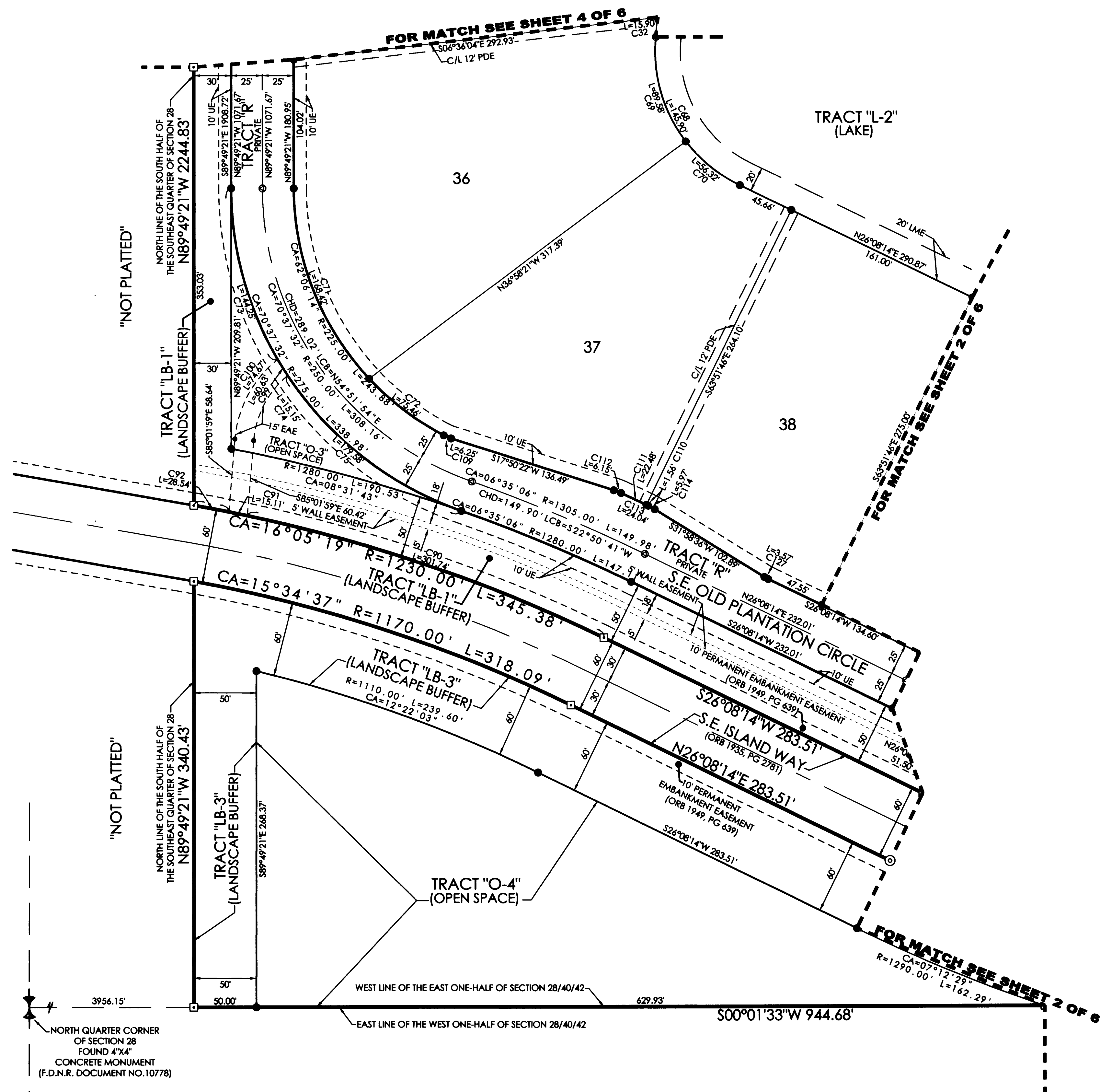
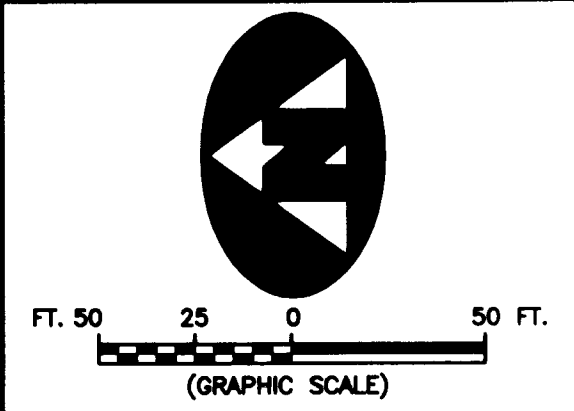


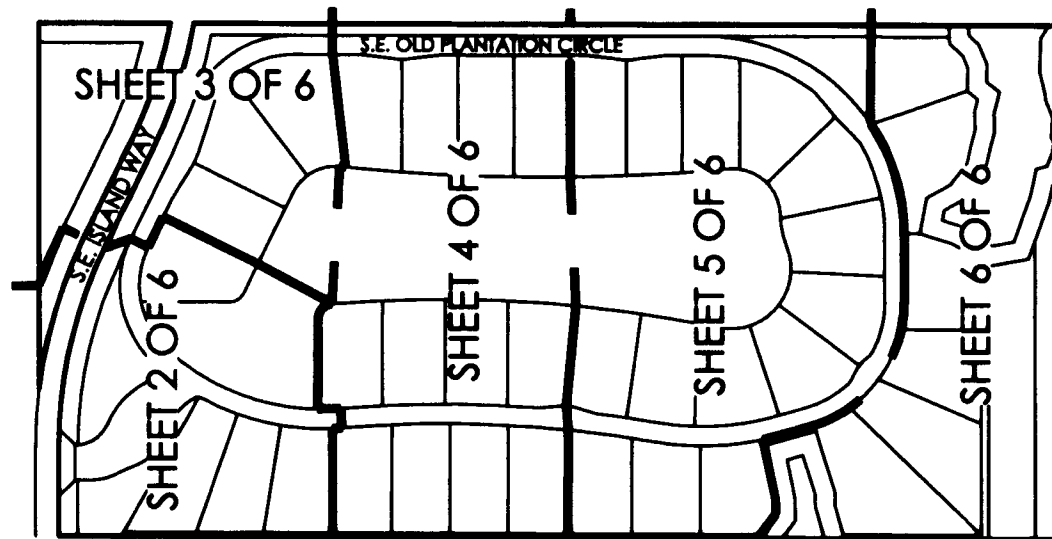
OLD PLANTATION PUD
 LYING IN THE SOUTH HALF OF THE SOUTHEAST QUARTER OF SECTION 28,
 TOWNSHIP 40 SOUTH, RANGE 42 EAST, MARTIN COUNTY, FLORIDA



CURVE TABLE

C32	CA=00°10'15"	R=5330.00'	L=15.90'	LCB=S84°17'05"E	CHD=15.90'
C68	CA=69°39'49"	R=120.00'	L=145.90'	LCB=S60°58'08"W	CHD=137.08'
C69	CA=42°46'24"	R=120.00'	L=89.58'	LCB=S74°24'51"W	CHD=87.52'
C70	CA=26°53'25"	R=120.00'	L=56.32'	LCB=S39°34'56"W	CHD=55.80'
C71	CA=42°53'20"	R=225.00'	L=168.42'	LCB=S68°44'00"W	CHD=164.52'
C72	CA=19°12'54"	R=225.00'	L=75.46'	LCB=S37°40'53"W	CHD=75.10'
C73	CA=30°03'15"	R=275.00'	L=144.25'	LCB=S75°09'02"W	CHD=142.60'
C74	CA=03°09'23"	R=275.00'	L=15.15'	LCB=S58°32'43"W	CHD=15.15'
C75	CA=37°24'54"	R=275.00'	L=179.58'	LCB=S38°15'35"W	CHD=176.41'
C90	CA=14°03'20"	R=1230.00'	L=301.74'	LCB=N19°06'34"E	CHD=300.98'
C91	CA=00°42'13"	R=1230.00'	L=15.11'	LCB=N11°43'47"E	CHD=15.11'
C92	CA=01°19'46"	R=1230.00'	L=28.54'	LCB=N10°42'48"E	CHD=28.54'
C99	CA=44°49'35"	R=77.50'	L=60.63'	LCB=N62°37'12"W	CHD=59.10'
C100	CA=46°15'15"	R=92.50'	L=74.67'	LCB=N61°54'22"W	CHD=72.66'
C109	CA=10°14'03"	R=35.00'	L=6.25'	LCB=S22°57'24"W	CHD=6.24'
C110	CA=00°04'00"	R=1341.00'	L=1.56'	LCB=N25°29'08"E	CHD=1.56'
C111	CA=00°57'37"	R=1341.00'	L=22.48'	LCB=N24°58'19"E	CHD=22.48'
C112	CA=06°39'08"	R=53.00'	L=6.15'	LCB=N21°09'56"E	CHD=6.15'
C113	CA=01°01'37"	R=1341.00'	L=24.04'	LCB=N25°00'19"E	CHD=24.04'
C114	CA=06°27'28"	R=53.00'	L=5.97'	LCB=N28°44'52"E	CHD=5.97'
C127	CA=05°50'22"	R=35.00'	L=3.57'	LCB=S29°03'25"W	CHD=3.57'

SHEET INDEX



LEGEND

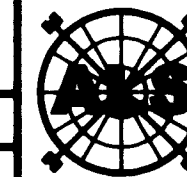
C/L	DENOTES A CENTERLINE	R	DENOTES RADIUS DISTANCE
PDE	DENOTES PRIVATE DRAINAGE EASEMENT	L	DENOTES ARC LENGTH DISTANCE
UE	DENOTES UTILITY EASEMENT	CA	DENOTES CENTRAL ANGLE
(R)	DENOTES A RADIAL LINE	LCB	DENOTES LONG CHORD BEARING
EAE	DENOTES EMERGENCY ACCESS EASEMENT	CHD	DENOTES CHORD DISTANCE
LME	DENOTES LAKE MAINTENANCE EASEMENT	ORB	DENOTES OFFICIAL RECORDS BOOK
		PG	DENOTES PAGE
		F.D.N.R.	DENOTES FLORIDA DEPARTMENT OF NATURAL RESOURCES

- DENOTES A SET PERMANENT REFERENCE MONUMENT (L.B. 7344)
- ⊙ DENOTES A SET MAG NAIL AND WASHER (PRM L.B. 7344)
- ⊙ DENOTES A SET BOLT AND WASHER (PRM L.B. 7344)
- ⊙ DENOTES A SET PERMANENT CONTROL POINT (L.B. 7344)
- ⊙ DENOTES A SET 5/8" IRON ROD AND CAP (L.B. 7344)

SURVEYOR'S NOTES

1. THE BASE BEARING, AS SHOWN HEREON, IS SOUTH 89°45'41" EAST ALONG THE SOUTH LINE OF THE EAST ONE-HALF OF SECTION 28, TOWNSHIP 40 SOUTH, RANGE 42 EAST AS SHOWN HEREON
2. IN THOSE INSTANCES WHERE UTILITY OR DRAINAGE STRUCTURES ARE CONSTRUCTED IN CONFLICT WITH THE PLATTED PERMANENT CONTROL POINT POSITION STRADDLERS MONUMENTED AS PERMANENT CONTROL POINTS WILL BE SET TO REFERENCE THE PLATTED POSITION.
3. LINES THAT INTERSECT CURVES ARE NOT RADIAL UNLESS OTHERWISE NOTED.
4. THIS INSTRUMENT WAS PREPARED BY WM. R. VAN CAMPEN, P.S.M. NO. 2424, IN AND FOR THE OFFICES OF ASSOCIATED LAND SURVEYORS, INC., 4152 WEST BLUE HERON BOULEVARD, SUITE 121, RIVIERA BEACH, FLORIDA, 33407

FILE: P281PLAT	
FB:	WO.NO.: P281
SCALE: 1"=60'	DATE: 9/16/2005
DWN: KVC	SHEET 3 OF 6



ASSOCIATED LAND SURVEYORS, INC.
 4152 W. BLUE HERON BOULEVARD-SUITE 121
 RIVIERA BEACH, FLORIDA 33404
 PHONE: (561) 848-2102 FAX: (561) 844-9659 EMAIL: ALLSURVEY@AOL.COM